



High Performance Cutting

MAX Series

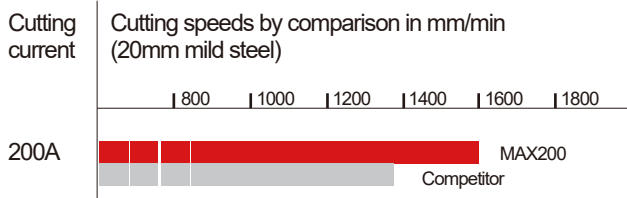
High Definition Oxygen/Air/N₂/H₃₅ Plasma cutting system with Extra Productivity



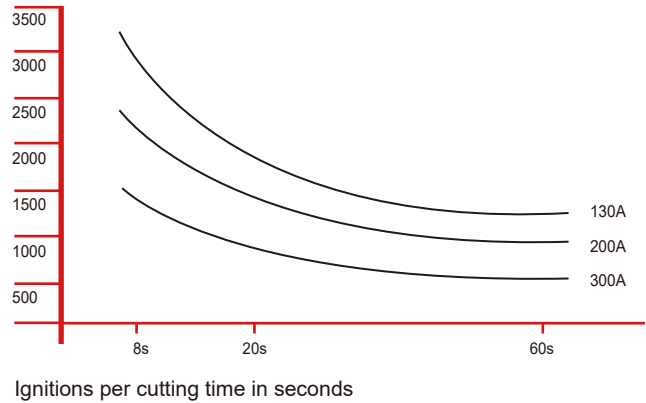
Better Quality | Higher Cutting Speed | Long Lifetime | Low Costs

Maximized Productivity

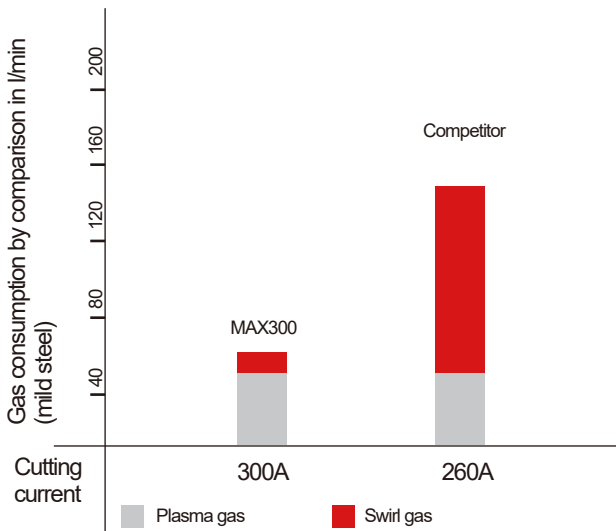
- MAX Series provides faster cutting speed to maximize productivity.
- Engineered with 100% duty cycle for the most demanding production environments.



Long-life Consumables



Efficient Gas Supply



Superior Cutting Performance



Optimized gas parameters are set and controlled by the software. With Oxygen/Air/N₂/H₃₅ plasma gas, the MAX Series plasma cutting system achieves impressive cut speeds, consistent cut quality and exceptional consumable life.

Cutting Capacity

| | MAX200 | MAX300 | MAX400 |
|--------------------------|-----------|-----------|-----------|
| Mild steel cut capacity | Thickness | Thickness | Thickness |
| Dross free* | 25mm | 35mm | 38mm |
| Production pierce | 32mm | 42mm | 50mm |
| Maximum cutting capacity | 50mm | 70mm | 80mm |

* Feature and material type can influence dross free performance.

Typical Cutting Sample



MS 20 mm, Oxygen/Air, Speed 1200 mm/min, 130 Amps

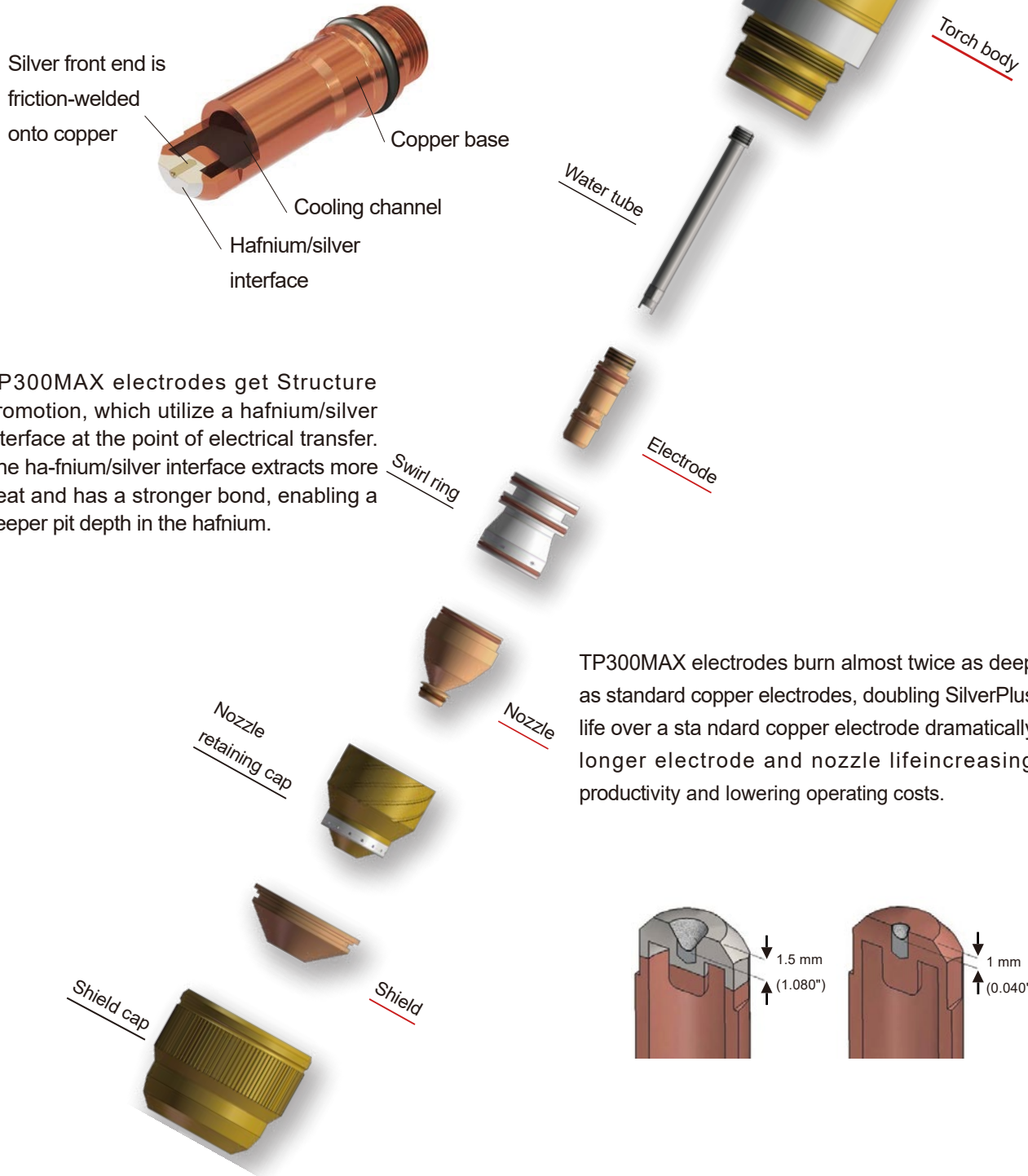
Operating Data (Mild Steel)

| Material thickness (mm) | MAX200 | | MAX300 | | MAX400 | |
|-------------------------|---------------------|------------------------|---------------------|------------------------|---------------------|------------------------|
| | Cutting current (A) | Cutting speed (mm/min) | Cutting current (A) | Cutting speed (mm/min) | Cutting current (A) | Cutting speed (mm/min) |
| 10 | 200 | 3500 | - | - | - | - |
| 16 | 200 | 2300 | 300 | 3100 | - | - |
| 20 | 200 | 1600 | 300 | 2100 | 400 | 2800 |
| 25 | 200 | 1200 | 300 | 1600 | 400 | 2200 |
| 30 | 200 | 800 | 300 | 1200 | 400 | 1800 |
| 40 | - | - | 300 | 850 | 400 | 1150 |
| 50 | - | - | 300 | 400 | 400 | 700 |
| 60 | - | - | - | - | 400 | 550 |
| 70 | - | - | - | - | 400 | 350 |

Long-life Consumables' Technology

Torch Improvement

Topwell updates TP300MAX torch to achieve fast cutting speeds, long life, and superior cut quality for high productivity and low operating costs.



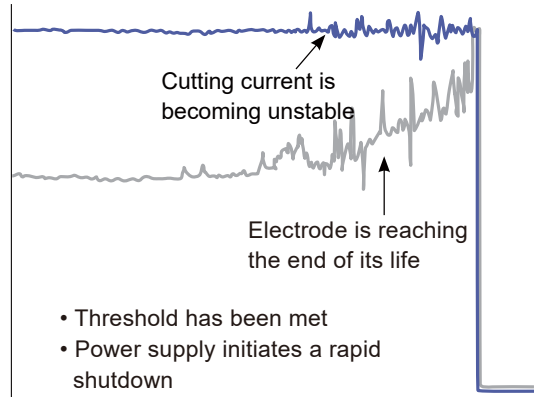
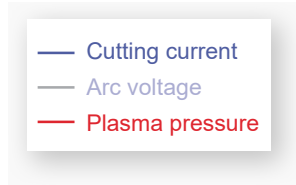
TP300MAX electrodes get Structure promotion, which utilize a hafnium/silver interface at the point of electrical transfer. The hafnium/silver interface extracts more heat and has a stronger bond, enabling a deeper pit depth in the hafnium.

TP300MAX electrodes burn almost twice as deep as standard copper electrodes, doubling SilverPlus life over a standard copper electrode dramatically longer electrode and nozzle life increasing productivity and lowering operating costs.

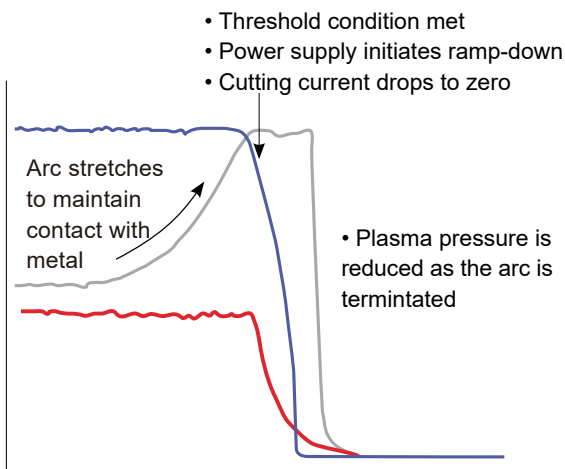
Automatic torch protection

The updated module response and disconnected in time after sensing the unstable current due to the electrode's wear and tear, which dramatically protect torch and extend consumable life.

- Prevents torch failure
- Reduces operating cost



Automatic torch protection



Ramp-down error protection

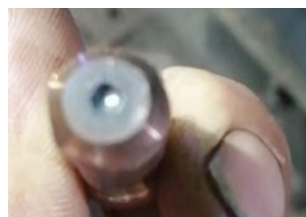
Automatic ramp-down error protection

when cutting end without proper ramp down of current and gas flow, the module senses and response in time. Power supply initiates ramp-down and cutting current drops to zero to protect electrode, effectively extending consumables life.

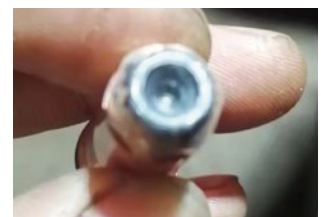
- Protects electrode
- Improves realized consumable life
- Reduces operating cost



260A 20 mm plate cutting
After 200 times pierce
300 meters cutting
Almost no loss



260A 20 mm plate cutting
After 340 times pierce 300
meters cutting
Slight loss



260A 20 mm plate cutting
After more than 800 times
Pierce 700 meters cutting
Total run out

Specifications

| System | MAX200 | MAX300 | MAX400 |
|----------------------------|--|--|--|
| Input Voltages | 3PH, 400V ± 15% | 3PH, 400V ± 15% | 3PH, 400V ± 15% |
| Max. Load Power Capacity | 50KVA | 75KVA | 100KVA |
| Rated output voltage | 50~200V | 50~200V | 50~200V |
| Max output current | 200A | 300A | 400A |
| Open circuit voltage (OCV) | 430V | 430V | 430V |
| Duty cycle rating | 100% @ 200A, at 40°C (104°F) | 100% @ 300A, at 40°C (104°F) | 100% @ 400A, at 40°C (104°F) |
| Operating temperature | -10 °C~40°C | -10 °C~40°C | -10 °C~40°C |
| Torch | TP300MAX | TP300MAX | TP300MAX |
| Dimensions | 380*670*850mm | 810*450*890mm | 810*450*890mm |
| Weight (complete) | 174KG | 252KG | 256KG |
| Certifications | CE, ROHS | CE, ROHS | CE, ROHS |
| Gas supply: | | | |
| - Plasma gas | O ₂ ; Air; N ₂ ; H ₃₅ | O ₂ ; Air; N ₂ ; H ₃₅ | O ₂ ; Air; N ₂ ; H ₃₅ |
| - Shield gas | Air; N ₂ | Air; N ₂ | Air; N ₂ |

BEVEL cutting



CNC cutting



High Performance Cutting

Web & Mail

www.cn-topwell.com
sales@topwellwelders.com

Phone

(+86)571-88231791
 (+86)571-88231792